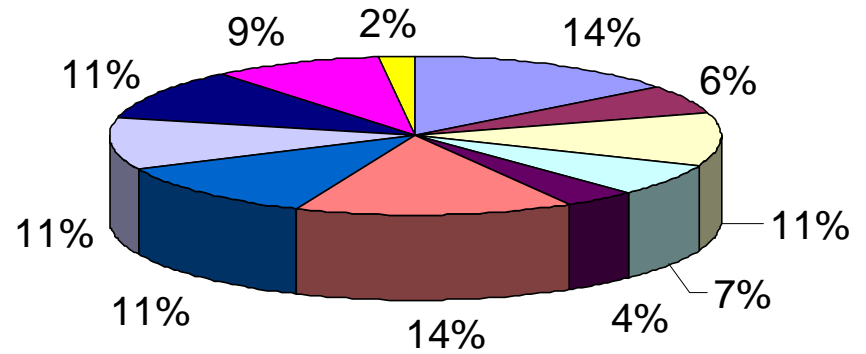


Possibilities for Future Cooperation

ACTIVITY INTERESTS - CERi MEMBERS



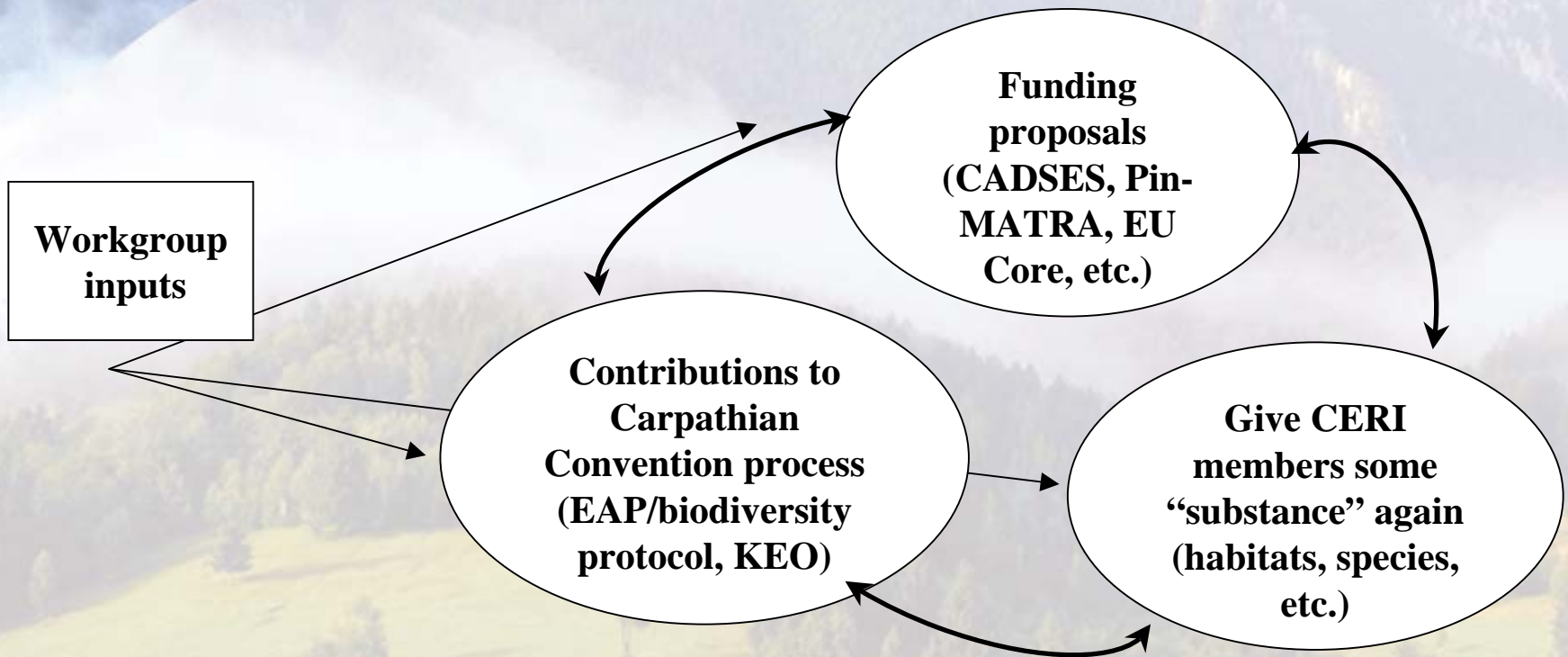
- Contributions to publications
- Grassroots development
- Project development and support
- EU twinning programs
- Socio-economic research and/or expertise
- Workgroups
- Data collection, research and/or assessment
- Monitoring and indicators
- Education
- Communications
- Other (journalism, culture)

How We Want to Work

Where we left off..

- In this phase, have more discretion, overview to decide not only where we want to work **geographically**, but also **thematically** (in all ecosystem types/in all forms of conservation)??
- We should also make more clear how we want to work **politically** (reactive, “challenging” or complementary to governments). E.g. does CERI “campaign”??

How workgroups can restart the network...



...but which ones to choose??

Where we left off..



Most common problems of former CEI	Possible new approaches
“Local” problem: not truly operating at the local level...do we want to??	?? Via communications workgroup
Inherently different approaches to conservation of all organizations	EAP project within the GEF (biodiversity workgroup)??
Economists? Indigenous and historical information?	?? Socio-economic workgroup
Institutional differences	Work with CNPA via biodiversity workgroup
Small staff, enormous workload	Another motivation to strengthen network as soon as possible!!

Which workgroups??

For now..

- **Biodiversity**

- Align with needs of Convention workplan
- Covered in CADSES and GEF proposals

- **Communications**

- Key to raising donor interest again and helps develop independent “branding”
- Covered in CADSES proposal

- **Others?? Sustainable development/finance??
Socio-economics?**

Which workgroups??

In the very near future...subgroups of biodiversity

- **Biodiversity**

- **Data clearinghouse** (Pin-MATRA)

- **Monitoring and indicators**, including habitat prioritization (GEF, EU-LIFE – raptor project)

- **Ecological networks**, including buffer zones and corridors for PAs (Pin-MATRA)

*The biodiversity WG would be composed of the heads of these subworkgroups and the lead of the biodiversity WG would probably sit on GEF steering committee for CERI

Biodiversity WG Discussion

All organizations interested in being part of this workgroup, please join and discuss the following:

- Start to develop 'terms of reference' for this group (e.g. scope, scale and purpose of work, filling in gaps in previous assessment, etc.)
- Start to develop terms of reference for the coordinator for this future group
- Determine a timeline for finalizing the TORs and choosing a coordinator
- Have a rapporteur report back on results of discussion

Communications WG Discussion

All organizations interested in being part of this workgroup, please join and discuss the following:

- Start to develop 'terms of reference' for this group (e.g. scope, scale and purpose of work, marketing ourselves better locally and regionally, etc.)
- Start to develop terms of reference for the coordinator for this future group
- Determine a timeline for finalizing the TORs and choosing a coordinator
- Have a rapporteur report back on results of discussion