

Conservation of Wetlands in the Carpathians 16th – 19th November 2009, Tatranská Štrba, Slovakia

Practical Information for the Conference Participants

Conference Venue and Accommodation

Accommodation for conference participants and conference venue will be located in the Meander Hotel in Tatranská Štrba, Slovakia.

Address:

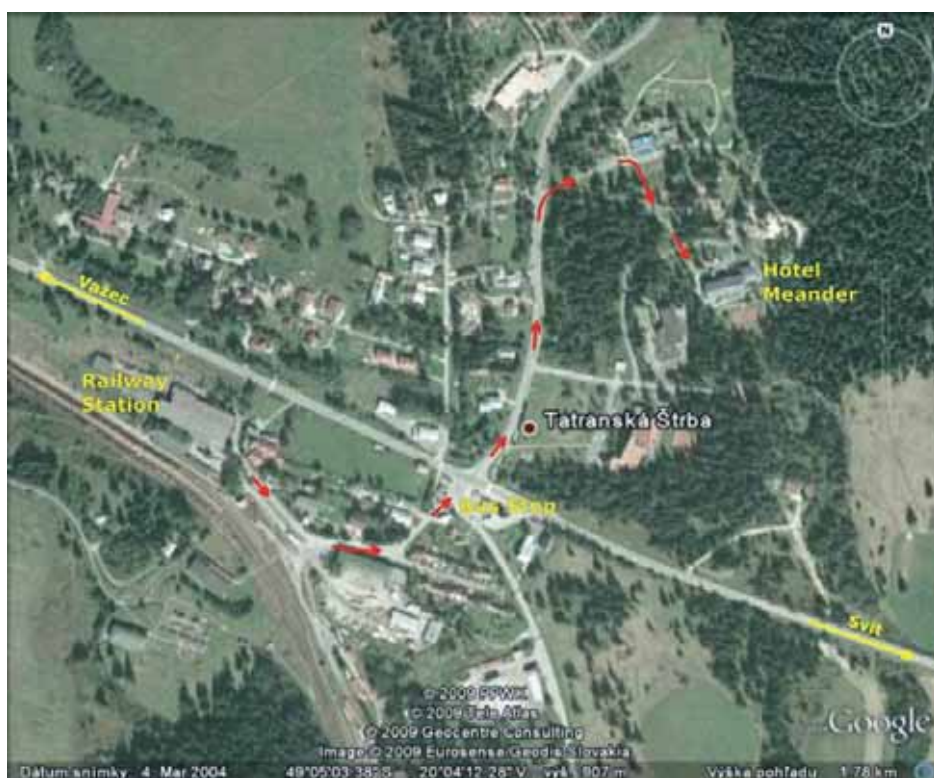
Hotel MEANDER
Rekreačná 42/9
059 41 Tatranská Štrba
SLOVAKIA

Tel: +421 52 4781051

+421 52 4781052

Fax: +421 52 4484231

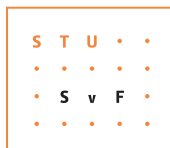
Email: meander@svp.sk



Web link: <http://www.hotelmeander.sk/index.php?loc=mapa>

The hotel is easily accessible by car or public transport; only about 15 minutes walking distance from the railway station or the bus stop (see the map).

In a case that the number of participants exceeds the capacity of the Meander Hotel, we will use the capacity of hotels in surroundings.



Traveling to Tatranská Štrba by airplane

Participants traveling to Tatranská Štrba by air may use flights connections to Vienna International (AT), Bratislava (SK) or Poprad – Tatry (SK) airports.

Arriving at Vienna International Airport

Participants arriving at Vienna International Airport may use transfer by Vienna International Airport Lines (bus) to one of the Vienna railway stations and take direct trains to Poprad – Tatry (SK). For connections from Vienna International Airport to Wien Westbahnhof or Wien Südbahnhof you can look on the website:

<http://www.viennaairport.com/jart/prj3/via/website.jart?rel=en&content-id=1135697462786&j-dummy=active&reserve-mode=active>

From Wien Westbahnhof there are direct Intercity trains *IC Tatran* and *IC Šariš* to Poprad – Tatry (SK). There is also train Nr. Zr 2522 /609/8815/8860 from Wien Südbahnhof to Poprad – Tatry (SK).

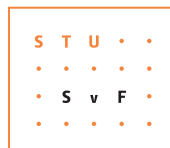
Alternatively it is also possible to take direct bus connection from Vienna International Airport to Bratislava Central Bus Station Mlynské Nivy and then continue from Bratislava to Tatranská Štrba by bus or train (see for options below). For travel connections from Vienna International Airport to Bratislava Central Bus Station Mlynské Nivy please visit: <http://www.viennaairport.com/jart/prj3/via/website.jart?rel=en&content-id=1135697462792&reserve-mode=active>

Arriving at Bratislava Airport

Participants arriving at Bratislava Airport may continue to Tatranská Štrba by bus or train. If you are deciding between bus or train for the sake of convenience we advise you to take train from Bratislava Hlavná Stanica railway station to Tatranská Štrba (name of the railway station is Štrba!) or Poprad – Tatry. For transfer from Bratislava Airport to Bratislava Hlavná Stanica railway station you can use bus Nr. 61 departing just in front of the airport.

There are also regular flight connections between Bratislava Airport and Poprad – Tatry Airport. For more information you can visit:





<http://www.letiskobratislava.sk/index.aspx?lang=1033>

or

<http://www.airport-poprad.sk/?lang=en>

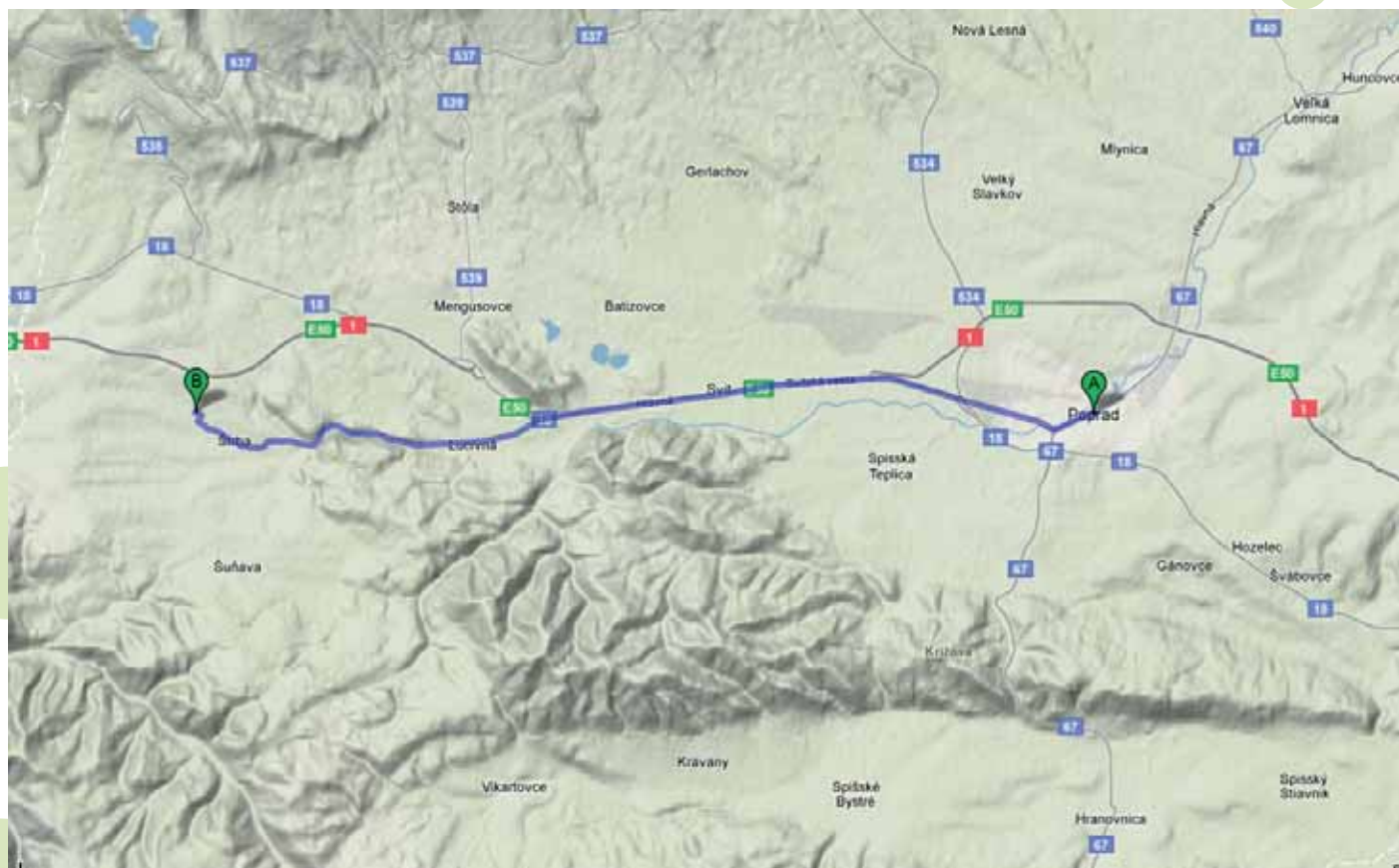
Arriving at Poprad – Tatry Airport

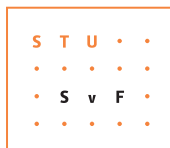
Poprad – Tatry Airport is the nearest airport to the conference venue. The airport offers connections with Bratislava, Bologna and Basel and from October 25th, 2009 new flight connections were announced to be launched to London, Brussels, Manchester, Warsaw, etc. For more information you can visit:

<http://www.airport-poprad.sk/informacie-pre-cestujucich.php?lang=en&data=futuredep>

Participants arriving at Poprad – Tatry Airport may take taxi to Poprad Bus Station and continue to Tatranská Štrba by bus or train, or take a taxi directly to Meander Hotel in Tatranská Štrba. The distance between Poprad – Tatry Airport and Tatranská Štrba is around 17 km. The price list for taxi can be found also at:

<http://www.airport-poprad.sk/informacie-pre-cestujucich.php?lang=en&data=doprava>





Traveling to Tatranská Štrba from Bratislava

Traveling by bus

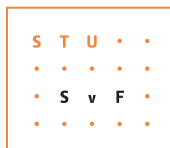
There are regular bus connections between Bratislava and Tatranská Štrba. The buses depart from the Bratislava Central Bus Station Mlynské Nivy. Thus as the journey takes more than 6 hours we recommend you to travel from Bratislava to Tatranská Štrba by train. To transfer from Bratislava Central Bus Station Mlynské Nivy to Bratislava Hlavná Stanica railway station you can use trolley bus Nr. 210 (about 10 minutes journey) which departs just in front of the main entrance to the bus station building.

Traveling by train

1. Participants arriving at Bratislava Hlavná Stanica railway station may take one of the Intercity/Eurocity trains to Poprad – Tatry railway station (direction Košice) and then continue by bus to Tatranská Štrba. Arriving to Poprad – Tatry railway station participants need to transfer to Poprad bus station, located 100 m from the railway station (it is just on your right hand, when you leave the railway station building) and take direct bus to Tatranská Štrba.

2. It is also possible to take one of the express trains from Bratislava Hlavná Stanica railway station directly to Tatranská Štrba (name of the railway station is Štrba).





For more detailed information about travel connections in Slovakia please visit: <http://cp.atlas.sk/vlakbus/spojenie/>. This search engine provides information also in English and German.

Traveling by car

For traveling from Bratislava to Tatranská Štrba by car you are advised to use motorway D1 direction Žilina. From Žilina you continue driving direction Poprad using road Nr. 18 and from Ivachnová you use again the motorway D1 up till exit Štrba. Using of the motorways in Slovakia is charged, you need to buy a vignette to be entitled to use the motorway. You can buy a vignette on every gas station or post office. The weekly vignette for cars up to 3.5 tons costs 4.90 EUR. For information about vignette prices you can visit: <http://www.ndsas.sk/vignettes/13284s>.

Traveling to Tatranská Štrba from Košice

Traveling by bus

There are only few direct bus connections from Košice to Tatranská Štrba. Therefore we advise you to take train if you travel from Košice to Tatranská Štrba.

Traveling by train

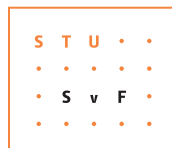
Participants arriving at Košice railway station may take one of the direct express trains or Eurocity trains from Košice railway station to Tatranská Štrba (railway station Štrba). The journey takes about 1.5 hours and it is the easiest connection to this direction.

It is also possible to take one of the Intercity trains to Poprad – Tatry railway station (direction Bratislava) and then continue by bus to Tatranská Štrba. Bus station in Poprad is located 100 m from Poprad – Tatry railway station (it is just on your right hand, when you leave the railway station building).

For more information about travel connections in Slovakia please visit: <http://cp.atlas.sk/vlakbus/spojenie/>. The search engine provides information also in English and German (on the website below on the right).

Traveling by car

For traveling from Košice to Tatranská Štrba by car you have to follow direction Prešov and Poprad, using mostly road Nr. 18. In some sections of the route (between Košice and Prešov, around the Široké Village and bypass around Poprad) the road is connected to newly built sections of D1 motorway. Using motorways in Slovakia is charged. You can buy a special vignette on every gas station or post office. The weekly vignette for cars up to 3.5 tons costs 4.90 EUR. For information about vignette prices you can visit: <http://www.ndsas.sk/vignettes/13284s>.



The participants applying for reimbursement are advised to use the most economical means of transport or car-sharing.

Reimbursement

The costs of your room, full board, VAT and local tax excluding extra costs (such as telephone calls, internet, mini-bar, laundry, etc.) are covered for you. Please keep in mind that you may be asked to share a room with another colleague.

Please, have your return travel tickets ready, the originals will be collected for reimbursement of your fare. We will ask you to send us the originals of your return tickets after you have returned back home.

For those of you who will arrive by car, real travel expenses will be reimbursed. The condition for their approval will be copies of receipts on fuelling, technical vehicle licence, highway mark and evidence on trip (date, route and driven kilometres).