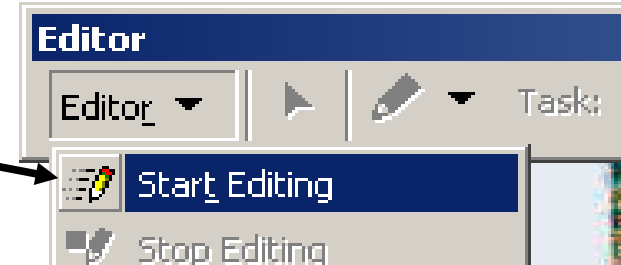
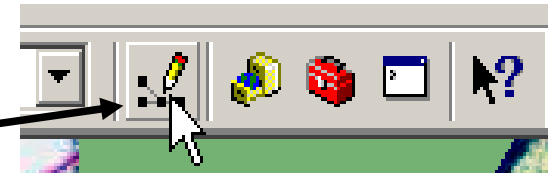
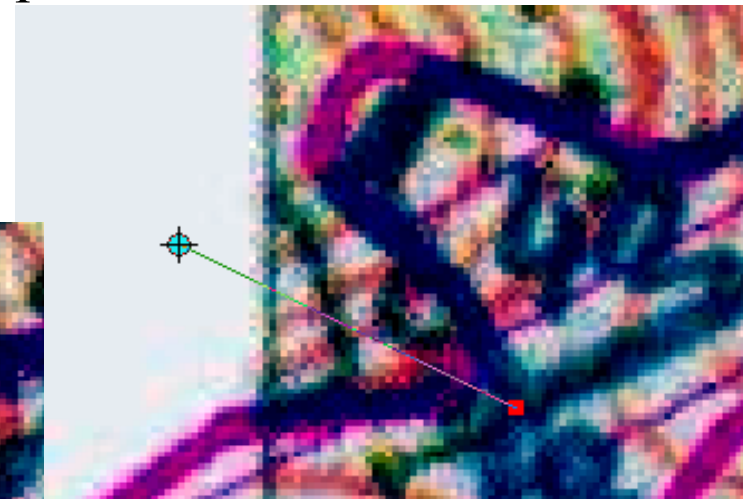
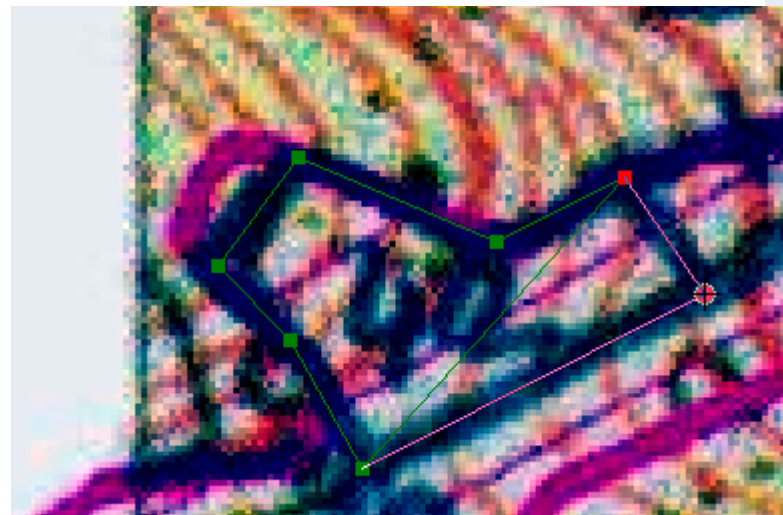


Digitizing images 1

1. Add existing layer and background layer to the map
2. Invoke Editor toolbar
3. In Editor toolbar click Start Editing
4. In Editor toolbar select Target layer
5. Be sure Create New Feature task is chosen

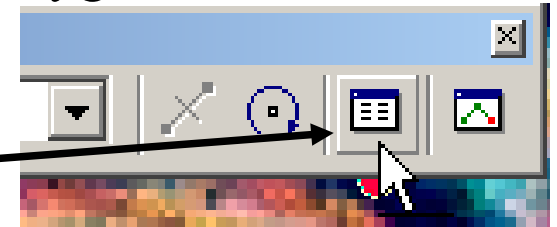


6. Click Sketch Tool – cursor is changing, and it is possible to create a new sketch
7. Click the first vertex and move cursor – it is connected with cursor by rubber line



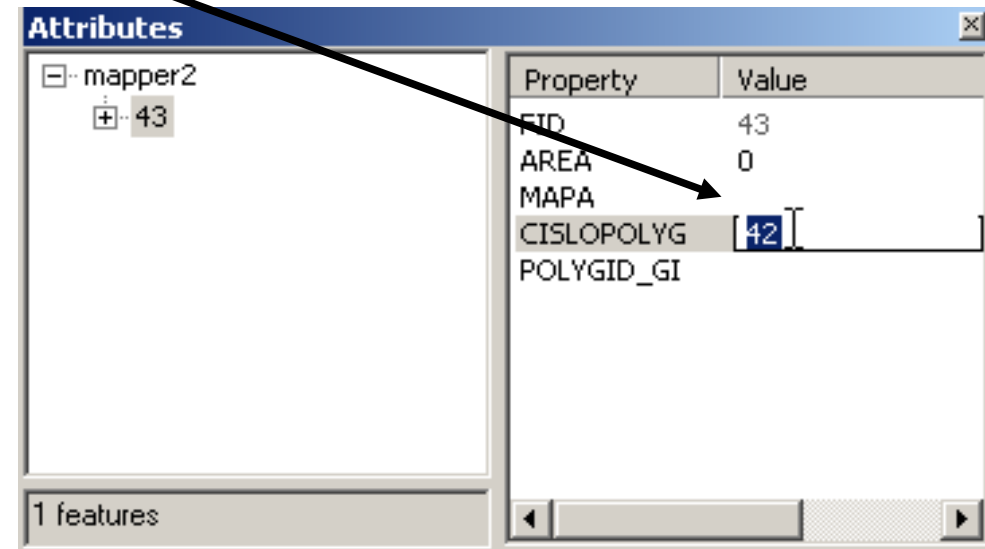
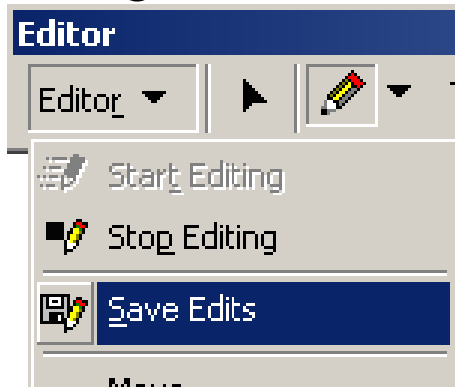
8. Double-click or press F2 when sketch is finished, the polygon is closed

9. Click Attributes icon from Editor toolbar

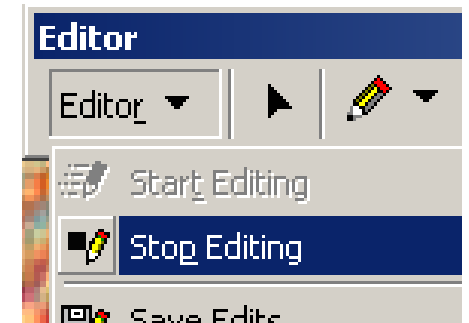


10. In Attributes dialog double-click a value to insert/edit data

11. Sometimes is good to click SaveEdits



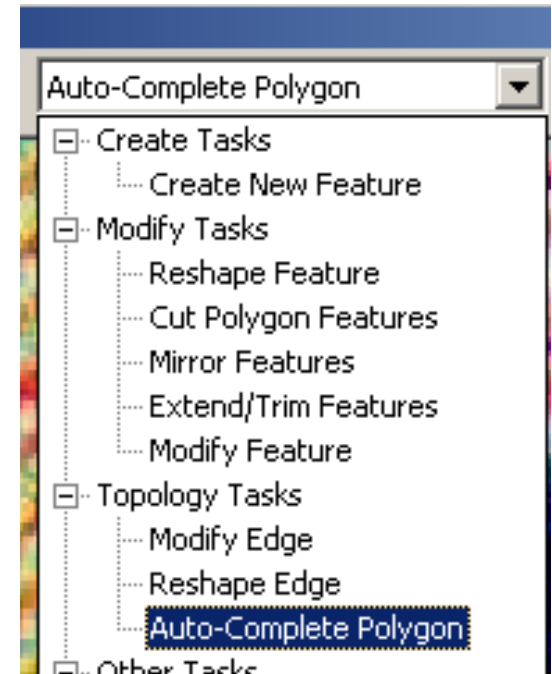
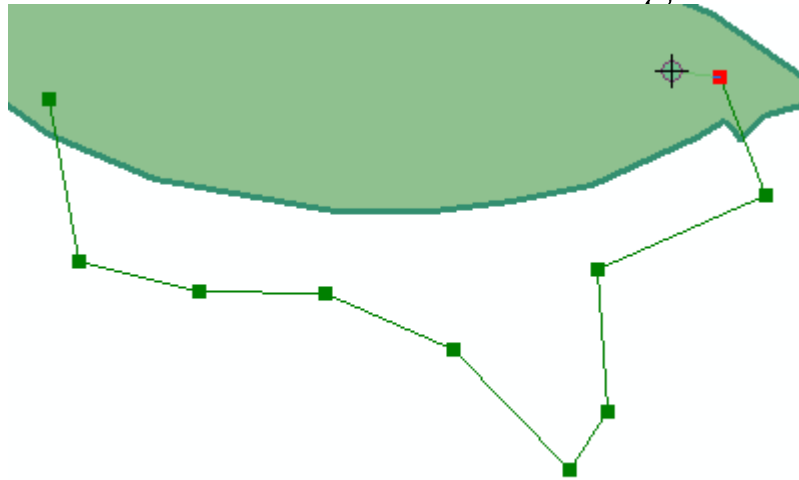
12. When all new features are added then click Stop Editing a save changes to modified layer



Digitizing images 2

Adding a feature to an existing feature

1. From Task dropdown menu of Editor toolbar select Auto-Complete Polygon
2. Click Sketch button
3. New sketch has to start and finish in the region of existing feature



4. Double-click or F2 will finished, the polygon sketch is closed with common border line with existing feature