

Incorporating socio-economic developments in the design of the Carpathian Econet

Irene Bouwma



Content

- Why include socio-economic developments?
- Current and future pressures
- Workshop afternoon

Why include socio-economic developments

Development of a network for the long term:

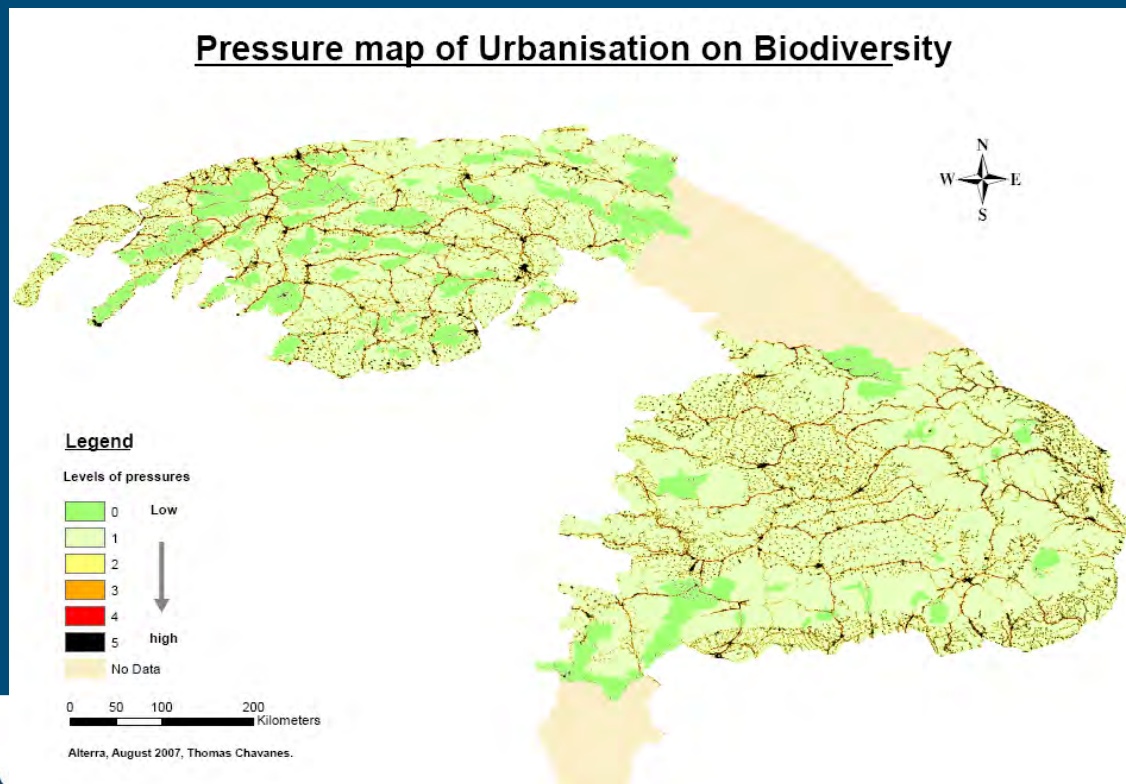
Resilient to land use change

Threat needs to be
spatially explicit and data
should be available
(easily)

How ?

Incorporate threats and opportunities in the design of the network during the selection process by Marxan through:

Development of a current and future pressure map



A

WAGENINGEN UR

Why include socio-economic developments

Sectors as considered important in Carpathian report (2001):

Agriculture

Transport

Industry

Water management

Tourism

Forestry

Which threats & opportunities to take into account?

Now

Threats

- Transport – location of roads & railways and intensity of road transport (EU)
- Current land use (Land cover)
- Location of settlements (Land cover)
- Ski-resorts
- Mines

Opportunities

- FSC- forests
- Areas under agri-environmental schemes

Which threats to take into account in the future?

Future

Threats

- Transport – growth in intensity of transport
- Land abandonment
- Growth in Settlements/ urbanization

How to make these scenarios ?

- Modeling
- Modeling and expert judgment
- Expert judgment

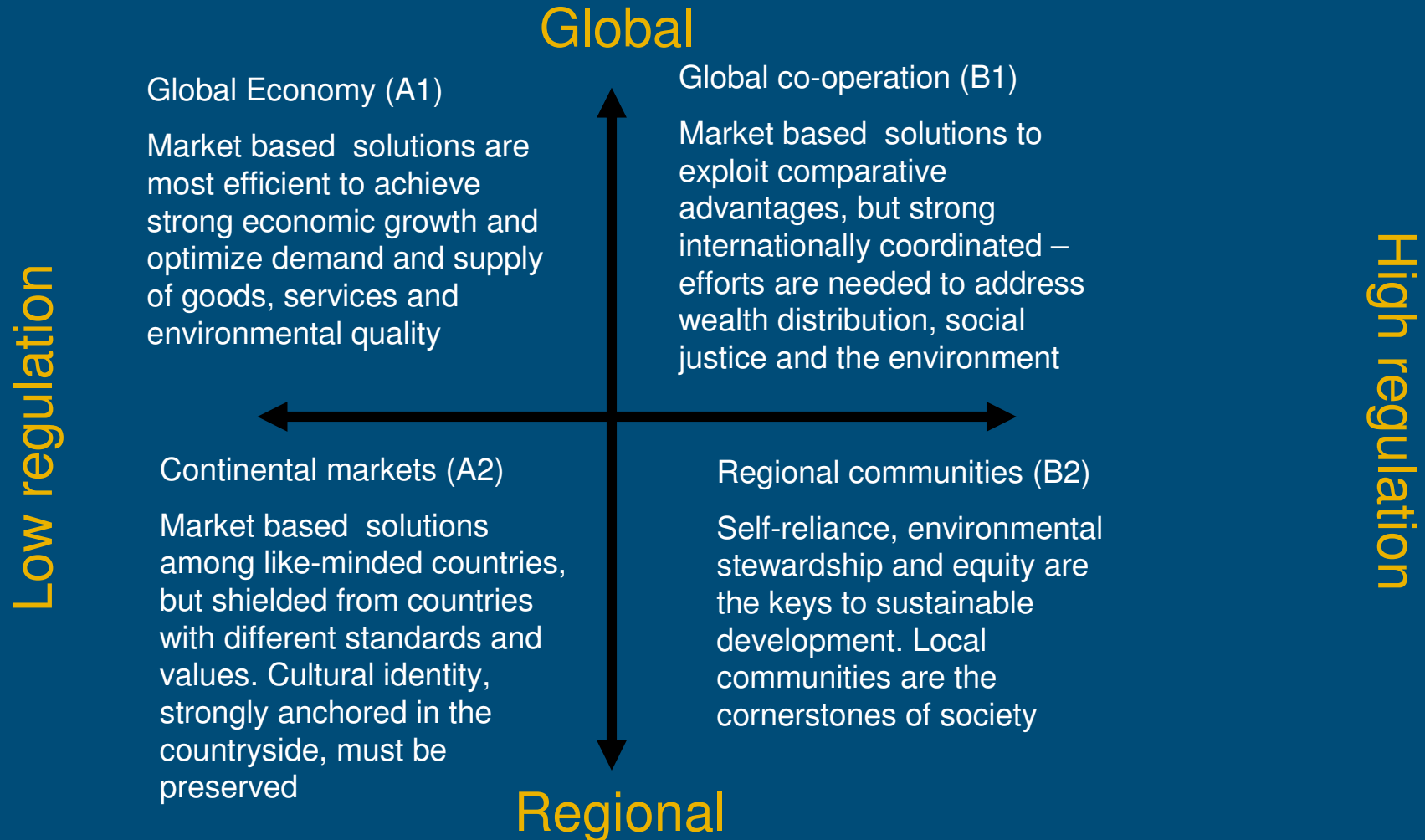
Information used for future : land abandonment & Urbanisation using EUruralis

Scenarios offer possibilities to identify possible futures by defining major processes (driving forces), functional relationships (cause - effect) enabling to identify positive or negative outcomes set against political or social expectations or desires.

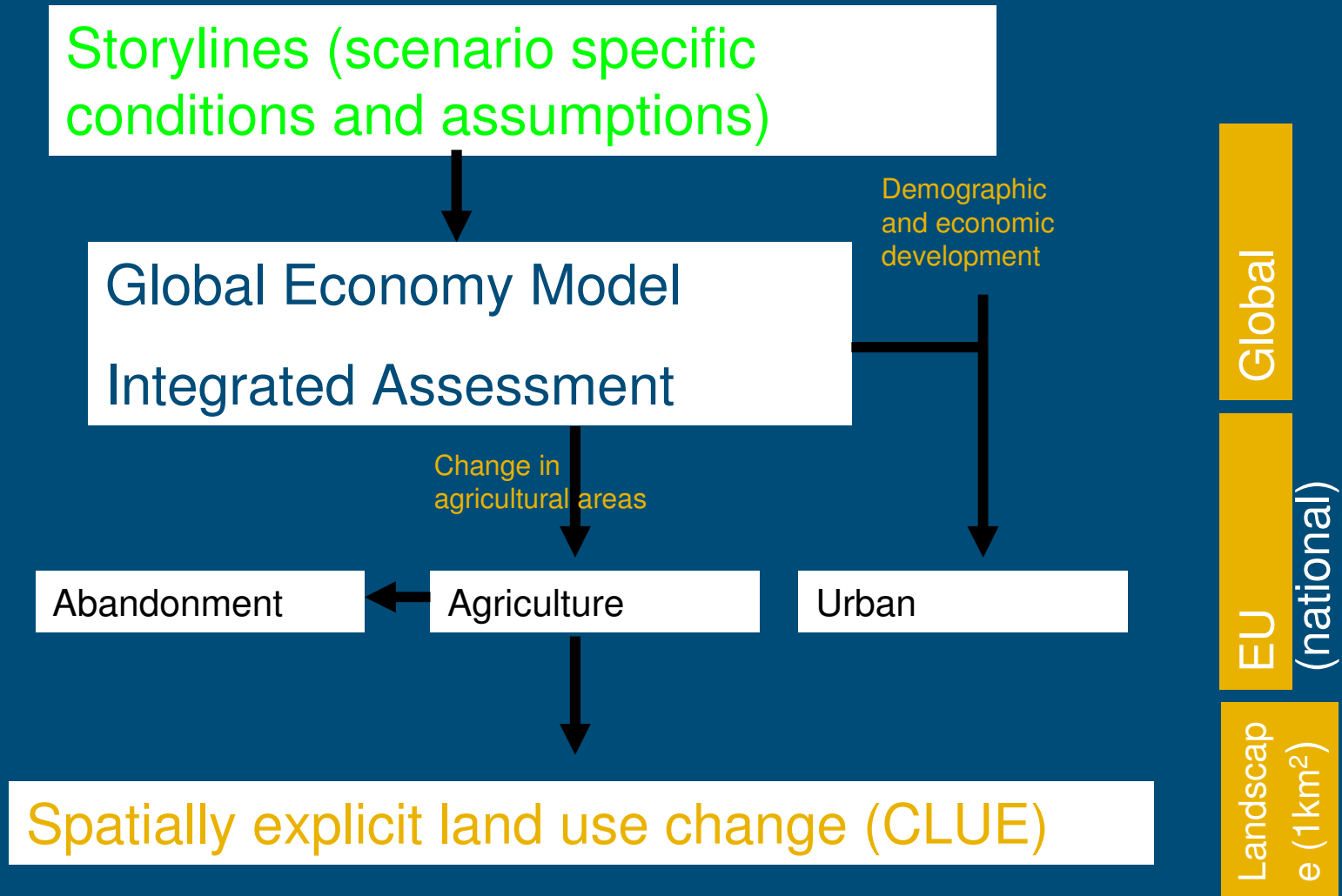
Scenarios help to delineate the margins of the “possible and conceivable”. Scenarios make explicit what the alternative assumptions, beliefs and attitudes are and how they diverge in outcomes

No info on Ukraine & Serbia !

Scenario's used in EUruralis



Modeling change



Example of some assumptions in the

scenarios

	Global economy	Continental markets	Global co-operation	Regional communities
Trade of agricultural products	Export subsidies and import tariff phased out	Export subsidies kept in place but volumes reduces. Import tariffs kept in place	Export subsidies and import tariffs phased out. Slight increase in non-tariff barriers	Export subsidies phased out. Import tariff maintained. Sharp increase in non-tariff barriers
Farm payments	Phased out-abolished in 2030	Basically unaltered	Fully decoupled and gradually reduced	Increase in agri-environmental payments
Urban development	No restrictions	No restrictions	Restrictions on urban sprawl i.e. incentives for compact cities	Restriction on urban sprawl: incentives to prevent desertion of rural villages

Allocation within the country: CLUE

Dynamic simulation of competition between land use

- Growth in built-up areas: based on proportional change in population, GDP, growth in industry and services

Rules for allocation - proximity

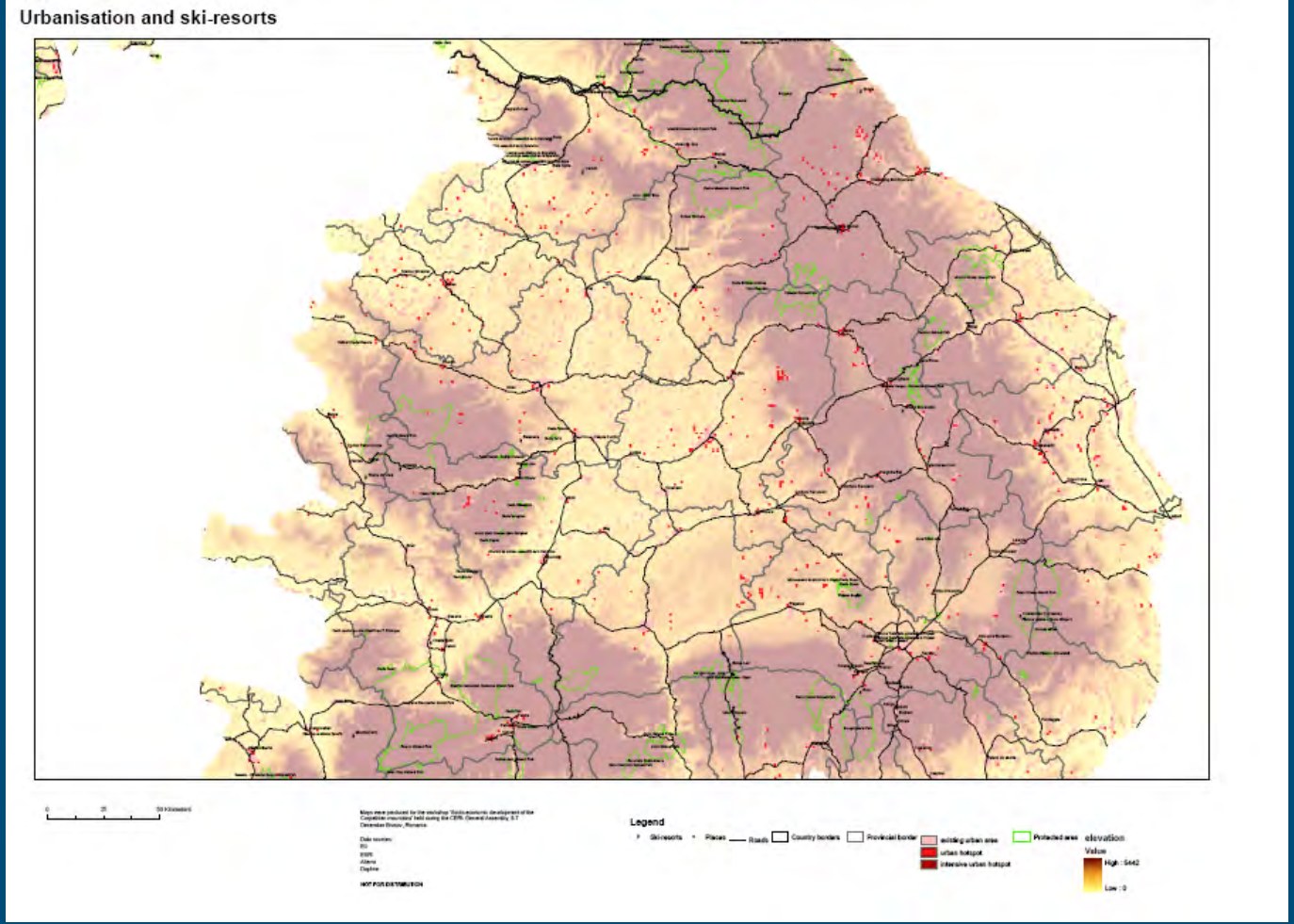
- Land abandonment:

Rules for allocation : accessibility, soil and geomorphology, climate, population, altitude, proximity, specific input based on scenario.

www.cluemodel.nl

Demonstration

Maps produced: urbanization



Questions?

Workshops

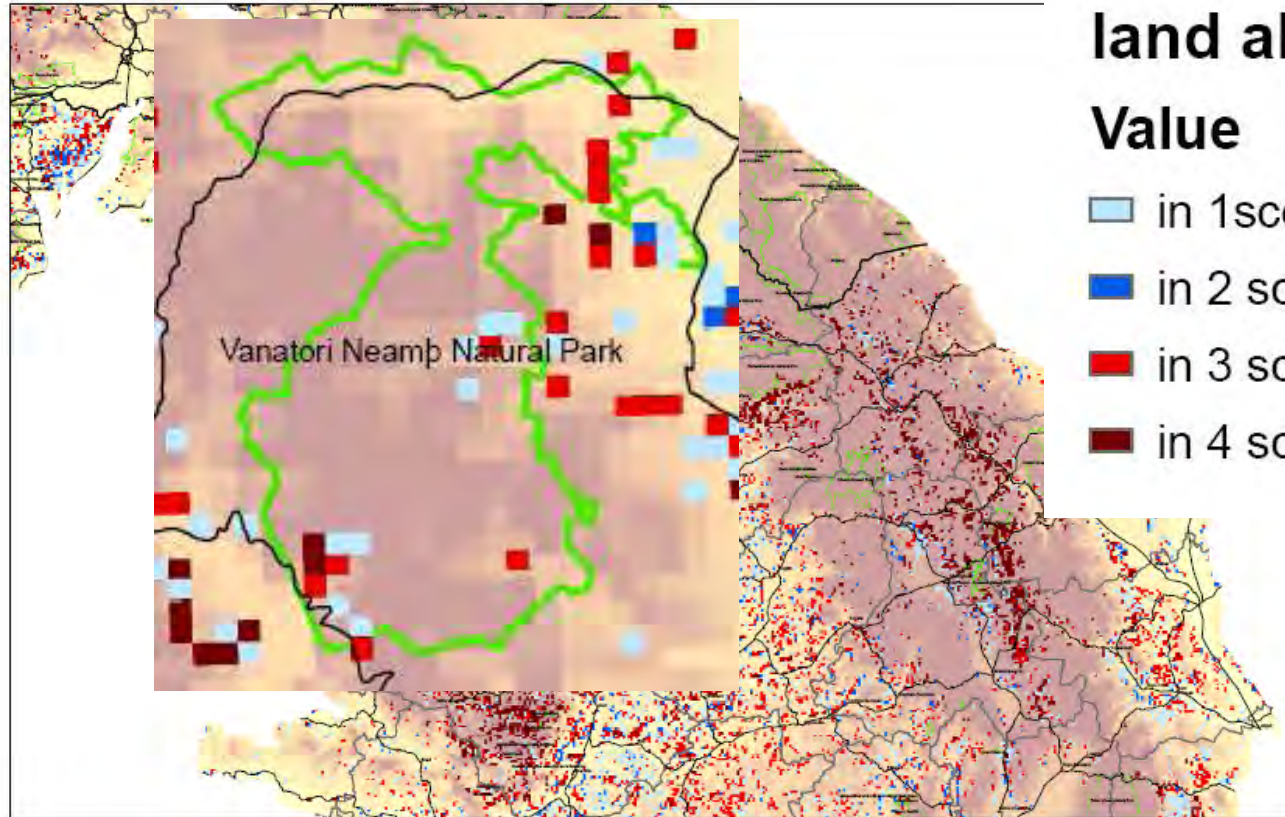
Aim:

Review available information on socio-economic developments:

- roads and railways
- ski-resorts
- urban growth
- land abandonment

Maps produced: land abandonment

Land abandonment risk



land abandonment risk Value

- in 1 scenario
- in 2 scenario's
- in 3 scenario's
- in 4 scenario's

Roads and railways



Legend

- Places
 - Railroads
 - Roads
- Road Intensity 2000
-

Mapa realizat în cadrul proiectului "Sisteme economice dezvoltate în regiunile competitive europene", finanțat prin Fondul European de Dezvoltare Regională, în cadrul Programului Operațional Regional al României.

Data sursă:
 IGN
 Alena
 Dapla

NOT FOR DISTRIBUTION

- Legend
- Places
 - Railroads
 - Roads
- Road Intensity 2000
-
- County borders
 - Provincial border
 - Protected area
- elevation
- Value
-
- High: 5442
Low: 0

Please keep in mind



Process

Split in country groups

- Maps on available socio-economic information
- Question form
- Add. historical trends on population growth, tourist development and agricultural employment

Good luck

© Wageningen UR

