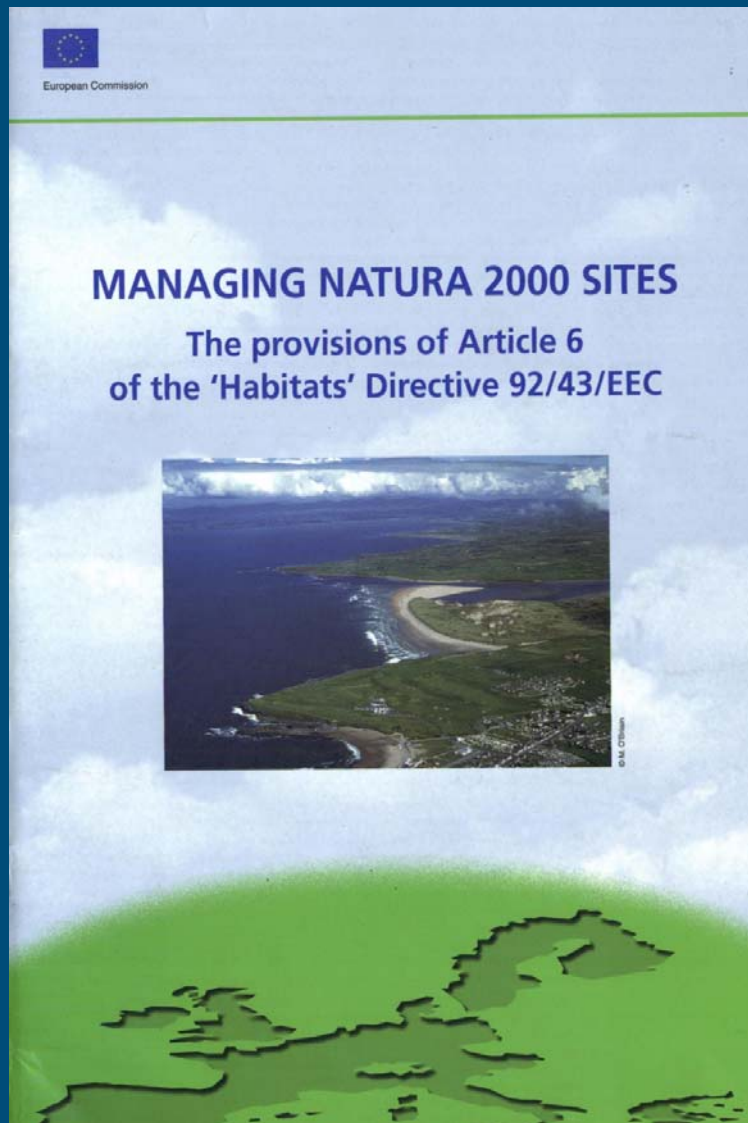


## Management and Follow up



- Article 6
- Management planing and stakeholder involvement
- Forestry and biodiversity
- Project development

# Article 6



Art 6.1: Establishment of necessary conservation measures.

Art 6.2.: Avoid deterioration of natural habitats, the habitats of species and the species .

Art. 6.3.: Assessment of plans and projects that likely to have significant effect on the site's conservation objectives

Art. 6.4.: Imperative reasons of public interest ( incl. those of social and economic nature); compensatory

# Article 6.1

## Relates to Conservation Measures

(Positive and structural; not incidental; compare article 6.3)

**AIM:**  
Maintenance or restoration of habitats and species in Favourable Conservation Status.

### EXAMPLES:

Management Plans, Physical Planning, Monitoring and Inspection, Management Contracts, Forest Certification, System for assessing favourable conservation status.

## Article 6.2

Avoid deterioration of natural habitats, species and habitats of species

Member States are required to take preventive measures to avoid deterioration and disturbances that could significantly influence the site.

These measures apply only to the species and habitats for which the sites have been designated.

### Deterioration

When the area covered by the habitat in a given site is reduced or the specific structure and functions necessary for the long-term maintenance or the good conservation status of the typical species which are associated with this habitat are reduced compared to initial status.

## Article 6.3.

Assessment of plans and projects that are likely to have *significant* effect on the site's conservation objectives.

Significant needs to be interpreted objectively. The significance of effects should be determined in relation to the specific features and environmental conditions of the protected site.

Includes existing use and activities, unless included in an agreed management plan

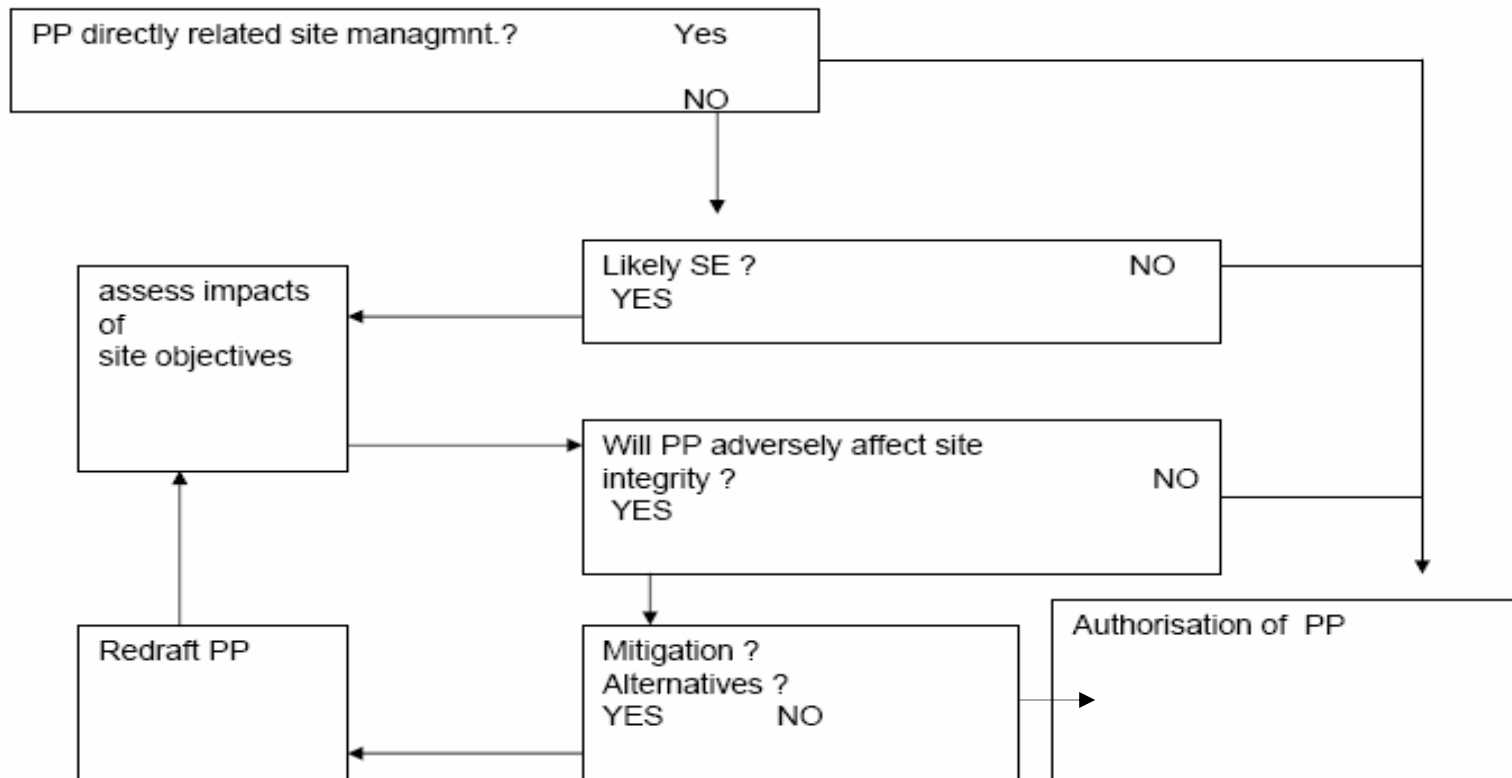
Competent Authority needs to agree and issue or decline a permit

# WHAT IS SIGNIFICANT

- Is related to the Favourable Conservation Status of Habitats and Species on site level
- The HD gives no determined criteria for significant.
- It is related to “no reasonable scientific doubt”
- Combined effects caused inside and outside
- Related to existing use and new projects and plans.

**Competent Authority needs to carry out  
Appropriate Assessment**

# Assessment of plans



## Article 6.4.

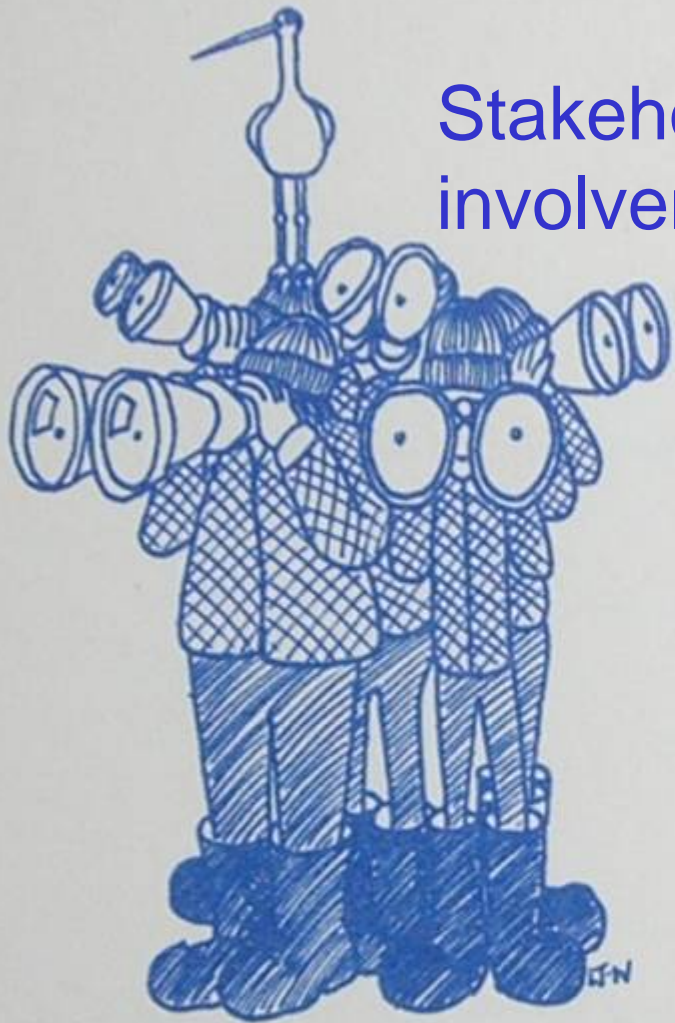
Imperative reasons of overriding public interest ( incl. those of social and economic nature); compensatory measures.

The provisions of Art 6(4) apply when the results of the preliminary assessment under Article 6(3) are negative or uncertain.

Compensation obligation



# Stakeholder involvement



Us

Them



Us

Them



# Traditional Nature Conservation

- Ignores the role of human beings and cultural aspects
- Lack of stakeholder involvement
- Too much emphasis on species
- Too much emphasis on protected areas
- Lack of consideration of the value of public goods and services
- Ignorance that ecosystems contribute to the overall environmental quality

# Levels of participation:

- **Passive participation** – people participate by being told what to do.
- **Participation by information giving** – people are answering questions but have no influence on planning.
- **Participation by consultation** – people participate by being consulted; their view might modify planning.
- **Participation for material incentives** – people participate in return for e.g. cash or land, but only during implementation of a plan of project. People have no stake in prolonging activities when the incentives end.
- **Functional participation** – People participate by forming groups to meet **predetermined** objectives; no participation in early stages; these groups might become self-dependent.
- **Interactive participation** - People participate in **joint analysis**, which leads to action plans and the formation of new local institutions or strengthening of existing ones; these new institutions take control over decisions.
- **Self mobilisation** - People participate by taking initiatives independent of external institutions

# Definition: stakeholder

- an agency, organisation, group or individual who has a (direct or indirect) interest in the project / programme / problem / issue or who affects or is affected positively or negatively by the implementation and outcome of it.



# Importance and influence of stakeholders

## Importance

*The impact stakeholders (can) have on the outcome of a process*

## Influence

*The power which stakeholders have to control what decisions are made*

*The extent to which the stakeholder is able to persuade others into making decisions and following a certain course on action*

# DFID's - influence and importance matrix

I  
m  
p  
o  
r  
t  
a  
n  
c  
e

- A.
  - high importance
  - low influence

- B.
  - high importance
  - high influence

- D.
  - low importance
  - low influence

- C.
  - low importance
  - high influence

I  
n  
f  
l  
u  
e  
n  
c  
e

# Organisational Structure de Biesbosch



# Agriculture and Biodiversity

Agriculture shaped 60-70% of the landscape

Agriculture added to the landscape and biodiversity

large % of the bird and plant species live outside of protected areas, including endangered ones

Land abandonment and intensification; two opposite processes with significant impact on biodiversity



**WINNER**

Wageningen International

**WAGENINGEN UR**

*For quality of life*

Natura 2000 – Lviv, October 2007