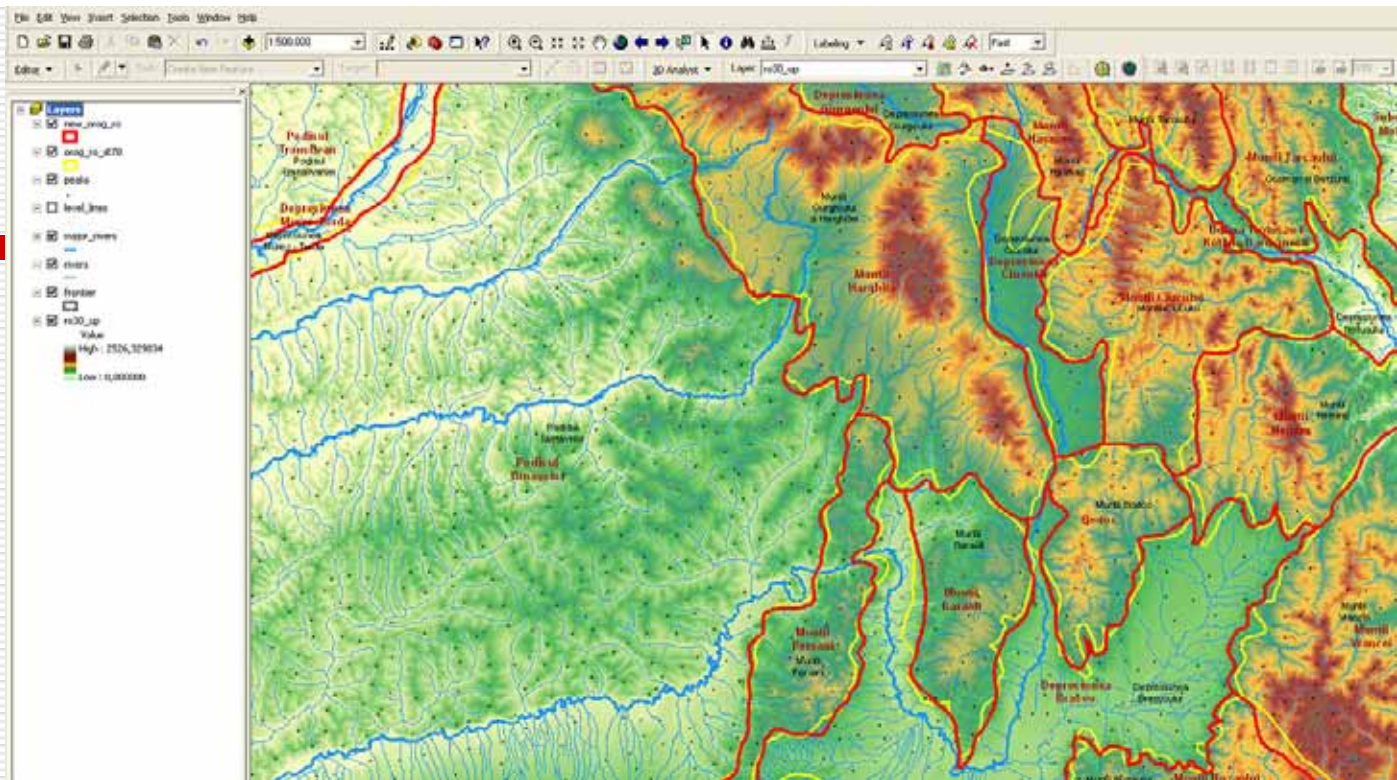


BBI Matra Project

Design of the Carpathian Ecological Network – CBIS

Report on the process of data collection in Romania

Ioan Abrudan - Romania



It was done using the following data:

- ❑ **A. GIS layers:**
- ❑ the existing boundaries of the orographical units for Romania provided as a starting point
- ❑ (scale 1:750000)
- ❑ digital elevation model – SRTM at 30m resolution
- ❑ layer of Romanian rivers – scale 1:100000
- ❑ layer of level lines derived from SRTM
- ❑ layer of peaks: scale 1:100000
- ❑ layer of Romania boundaries: scale 1:100000
- ❑ general map of Romania: raster scale 1:100000

B. Documentation (geography books):

- 1. The Geography of Romania vol.III (The Carpathians)
 - 2. The Romanian geo-morphology, by prof. Tarziu and prof. Sparchez
 - 3. The relief units of Romania (vol.I,II – C. Meridionali, M. Banatului, M. Apuseni and Podisul Transilvaniei)
 - The refining of borders and names was done with help from prof. Sparchez – a geo-morphology specialist
-

Problems encountered:

- There is no available map better than that at 750.000 scale for entire zone of Romanian Carpathians
- We didn't find a clear description of the boundaries of orographical units which can be used for refining (a lot of the description of the limits can't be identified on the GIS maps)
- Thus, the only possibility to refine (in the reasonable time) the borders was to overlap the provided layer of orographical regions to a digital elevation model

Better data available in the next months:

- - M. Plopiș, Meșes, Pad. Craiului, Vlădeasa, Bihor, Gilau, Depr. Arieș, M. Codru Moma, Zarand, Metaliferi, Depr. Brad Halmagiu, M. Trascău, Bucegi-Leaota, Făgăraș, Parang, Retezat, Depr. Hateg-Orastie, Banat scale 1:100000 from National Geography Institute
-

Preparation of the national list of plant and habitats in Romania

Probable Databases

- ❑ Database with forest management planning information (ICAS Bucharest)
 - ❑ Database with vascular plants and Bryophytes (Romanian Academy)
 - ❑ BIMS – database with diverse information (maps, species, habitats) (Ministry of Environment and Sustainable Development)
-

2. Preparation of the national list of endemic plant species in Romania (1)

Problems arising after checking the entire plant species list

- The list received in February included 25 taxons that were not originally included in Romanian 1999 list. Now, in the new list, they are marked **no** in inRO_old column (e.g. *Acinos alpinus* ssp. *baumgartenii*, *Alchemilla bucovinensis*).
 - 5 taxons, included in the old Romanian list, did not appear in the one received in February 2007, so they were reintroduced in the new list and marked with **yes** in inRO_old column (e.g. *Carduus collinus* ssp. *glabrescens*, *Centaurea pinnatifida*).
 - 158 taxons from the entire list (526 taxons) are proposed to be excluded, not even being mentioned by *Flora Europaea*
-

2. Preparation of the national list of endemic plant species in Romania (2)

- 55 taxons, also proposed to be excluded from the list, according to Flora Europaea, are :
 - not recognized at least as subspecies (ex. *Androsace villosa* ssp. *arachnoidea*) or
 - included in other taxons (*Aconitum moldavicum* ssp. *hosteanum* included under *A. lycoctonum* ssp. *moldavicum*), or
 - synonymous species (*Hypericum boissieri* in synonymy to *H. rochelii*), or
 - with the natural range reaching outside of the Carpathian Ecoregion (ex. *Acanthus balcanicus*)

 - 9 taxons have uncertain existence in Romania

 - More than 50 taxons have ambiguous or not clear status (different sources cite them in a different way)
-

3. Preparation of the national list of alliances

Problems arising after checking the alliances list

- 5 alliances, not included in our old list, are still mentioned within Romania in the list received in Feb. 2007, and now marked with **no** in the inRO_old and also "no" in the inRO_new column of the new list.
 - 30 alliances, included in the old list, are missing in the Feb. 2007 one so we have reintroduced them and marked with **yes** in the inRO_old and also "yes" in the inRO_new column of the new list.
 - 21 alliances are new, 16 (from 30 above) reintroduced as they were missing from the Feb. 2007 list and 5 were introduced now according the latest references from Romania.
-

3. Preparation of the national list of alliances (2)

- other 21 alliances have a modified nomenclature in the new list (sometimes only the authors), according Romanian sources.
 - 3 alliances are marked with “yes” in the inRO_old and “no” in the inRO_new column because they were included under other alliances (Dicrano-Pinion to Betulion pubescentis) or became synonymous (Festucion rupicolae with Festucion valesiaca, Salicion incanae with Salicion elaeagni).
 - Some alliances are ruderal, anthropogenic communities (Rumicion alpini) and others are present mostly outside of the Carpathian region (Nymphaeion albae). Should they be excluded from the list?
-

4. Preparation of the national list of animal species in Romania

- Checked the list with focal species (presence in Carpathians);
 - Verified the species present in the Annex II of the HD (experts discussions regarding occurrence in Carpathians);
 - Data base searching:
 - ICAS data base - Carnivora (2006) and Artiodactyla (2003) – GIS data base - **checked – available**;
 - “Grigore Antipa” Natural History Museum data base for Insectivora (2000), Rodentia (2001), Chiroptera (2003), Lagomorfa and Artiodactyla (2004), Carnivora (2005) – **to be checked – available but not all in GIS**;
 - Natura 2000 data base – **available after preparation of the RO final lists (end of May)**;
 - BIMS data base – managed by INCDD – **to be checked -available upon an agreement with MESD**;
 - SOR BirdLIFE and Milvus data bases –for birds - **included in the Natura 2000 data base**
 - Different projects data bases (LIFE projects, etc.) – **checking the list of projects from MESD.**
-

**THANK YOU
FOR YOUR
ATTENTION!**
